



LITUO BIOTECH

## FOCUS ON

- Developing IVD field for 25+ years



# LTS-E300

## Feces Analysis & Processing System

Leading Technology For Healthy Life



# Redefining Stool Diagnostics with Intelligent Automation

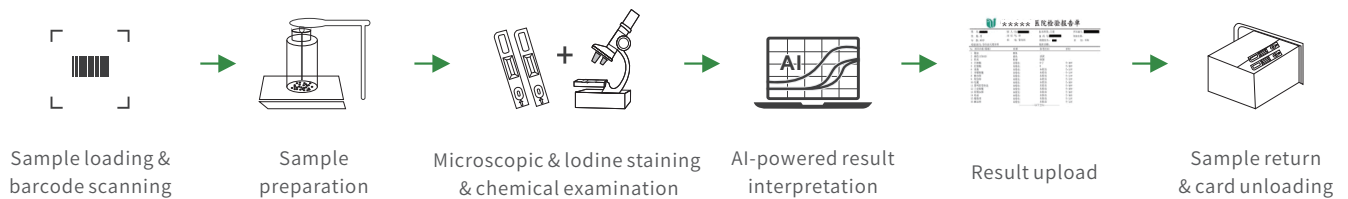
## Lituo Feces Analysis & Processing System

Empowered by advanced AI recognition and fully automated workflow, the system integrates microscopy and immunoassay technologies to deliver rapid and reliable results, helping laboratories achieve truly standardized and intelligent fecal diagnostics.



## Automated Workflow

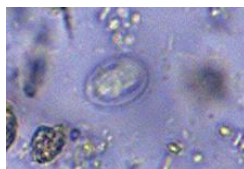
Fully automated intelligent workflow minimizes manual operation and ensures safe, unattended sample processing.



## Microscopic inspection (formed components)



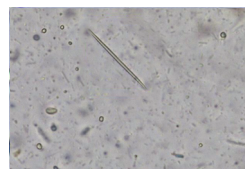
White Blood Cell



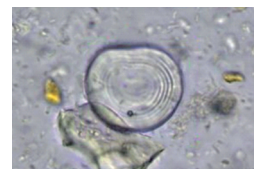
Giardia Lamblia Cyst



Fungus



Charcot-Leyden Crystal



Starch Granule



Hookworm Egg



Pinworm Egg



Liverfluke Egg



Tapeworm Egg



Roundworm Egg

# Key Features

## Smart & Intelligent Automation

- **AI Pathogen Recognition:** Automatically interprets morphological and immunoassay indicators.
- **Proprietary Algorithm:** Accurately identifies parasite eggs, RBCs, WBCs, and other pathological components.
- **Integrated QC System:** Original QC materials with an independent QC module; supports onboard QC, data analysis, and real-time quality monitoring.
- **User-Friendly Alert System:** Alerts for missing test cards, full waste bin, or low reagent levels.
- **Bidirectional LIS Connection:** Enables standardized and paperless case data management.
- **Results Analysis:** Automatically generates a summary and analysis based on the test results.

## Flexible & Efficient

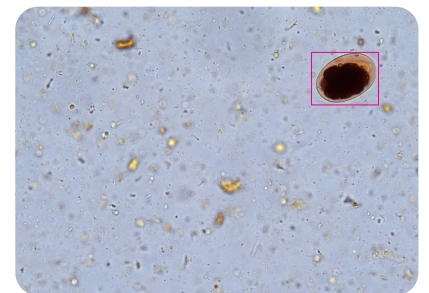
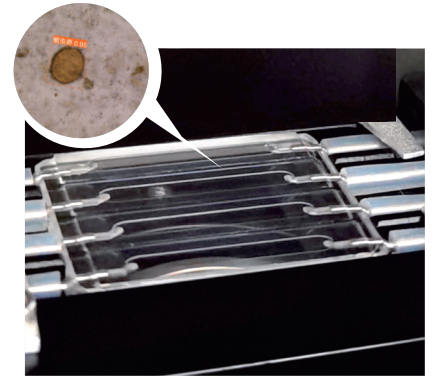
- **Fully automated sample processing:** direct tube loading with built-in barcode scanner; automatic unloading and pipeline cleaning.
- **High-definition microscopy:** Premium 10×/40× lenses with auto-focus and image acquisition resolution  $\geq 6$  megapixels, take 21 layers for review and up to 400 images for each sample.
- **High throughput:** processes 1–40 samples continuously with 5 STAT positions; 4-channel flow cell for  $\geq 80$  tests/hour.
- **Flexible reagent management:** 7 reagent card slots, loading capacity for  $\geq 140$  card tests; supports up to 6 items per sample with independent reaction time control.
- **Multiple Modes for Reliable Results:**

Standard mode

Lodine staining mode

Multi-field mode

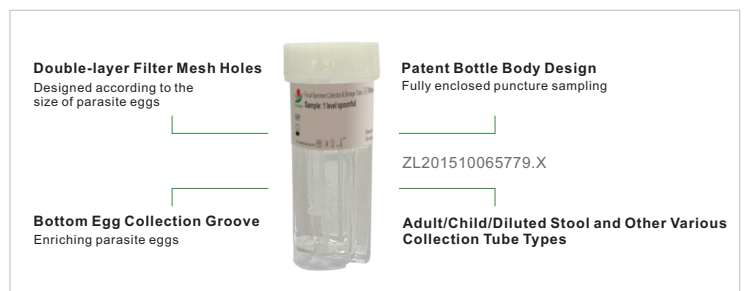
Sedimentation/floatation mode



Hookworm Egg (Iodine staining)

## Accurate & Reliable

- **Patented sampling tube:** fully enclosed puncture sampling with dual-layer filtration and bottom enrichment chamber for parasite eggs; compatible with adult, pediatric, and diluted stool samples.
- **Enhanced detection accuracy:** integrated hardware and algorithm ensure precise identification of parasite eggs and other pathological elements.
- **Standardized automated workflow:** reduces manual error and ensures consistent analytical precision.



Effectively Improving The Detection Rate Of Parasite Eggs

## Safe & Compliant

- **Modular design:** independent operation of each unit ensures low failure rate and easy maintenance.
- **Fully enclosed system:** no sample exposure, no odor, minimized biosafety risk.
- **Automated cleaning system:** dedicated cleaning solution with self-cleaning pipelines prevents cross-contamination and clogging.
- **User-Friendly Interface:** the software displays real-time information, such as the remaining quantities of test cards and reagents, detection status and estimated completion time.



# DETECTION ITEMS



Cleaning Solution

Specimen Diluent



Fecal Specimen Collection & Storage Tube

Supporting Consumables



## Morphology Tests

- **Routine Traits** : Color and Consistency
- **Microscopy Detection Items**:  
 Cells: Red Blood Cells, White Blood Cells, Epithelial Cells  
 Eggs: Roundworm Eggs, Liver Fluke Eggs, Hookworm Eggs, Pinworm Eggs, Tapeworm Eggs, Whipworm Eggs, Amoebic Cysts, Giardia Lamblia Cysts, Schistosomiasis, Fasciola Ginger, and Other Types  
 Others: Fungi, Crystals, Charcolaydon Crystals, Ganoderma Lucidum Spores, Starch Granules, Fat Globules, and Other Types

## Fecal Antigen Tests

- Fecal Occult Blood Test Kit (Hb Single Test)
- Fecal Occult Blood Test Kit (Hb & Tf Duplex Test)
- Helicobacter Pylori Test Kit
- Rotavirus Test Kit
- Rotavirus/Adenovirus Test Kit
- Calprotectin Test Kit
- Lactoferrin Test Kit
- Norovirus Test Kit

Power Requirement	Environmental Requirement	Main Unit Size (Length × Width × Height)
Power voltage: AC220V 50Hz Input power: 250VA	- Environmental temperature 15°C - 30°C - Atmospheric pressure 86.0kPa - 106.0kPa - Relative humidity 40% - 85% - No conductive dust, explosive and corrosive gases, and vibration sources	853mm x 636mm x 525mm
		<b>Overall machine mass</b>
		Not more than 80kg



Facebook



Instagram



YouTube



Official website



LinkedIn



### ZHUHAI LITUO BIOTECHNOLOGY CO., LTD.

Add: No.35, Yongan Three Road, Hongqi Town, Jinwan District, Zhuhai, Guangdong, China.  
 Tel.: +86 756 8639521 (Sales Center) FAX: +86 756 8639155 Email: market@lituo.com.cn



### HUNAN LITUO BIOTECHNOLOGY CO.,LTD.

Add:No. 129, Weiluke Road, Wangcheng Economic Development Zone, Changsha, Hunan, China.  
 Tel.:+86 731 82788178 Fax:+86 731 82789603 Email:market@lituo.com.cn

